

Integrated Economic Modelling - ECC3860 - Unit Evaluation Report

Faculty Of Business And Economics

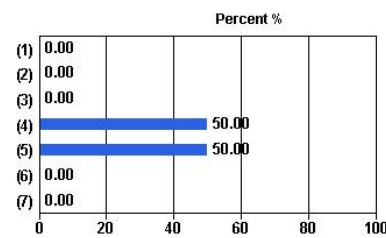
Number of Students Enrolled: 24
Administered: Semester 2, 2012 - WEB

Overall response: 50.00%
Number of questionnaires completed: 12

University Wide Items

1. The unit enabled me to achieve its learning objectives

Response Scale	Responses	Percent
(1) Strongly disagree	0	0.00%
(2) Disagree	0	0.00%
(3) Neutral	0	0.00%
(4) Agree	6	50.00%
(5) Strongly agree	6	50.00%
(6) Not applicable	0	0.00%
(7) Don't know	0	0.00%
Total (N)	12	100.00%

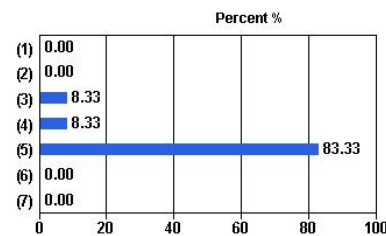


Campus	Median
Clayton	4.50

Median: 4.50
Mean: 4.50

2. I found the unit to be intellectually stimulating

Response Scale	Responses	Percent
(1) Strongly disagree	0	0.00%
(2) Disagree	0	0.00%
(3) Neutral	1	8.33%
(4) Agree	1	8.33%
(5) Strongly agree	10	83.33%
(6) Not applicable	0	0.00%
(7) Don't know	0	0.00%
Total (N)	12	100.00%



Campus	Median
Clayton	4.90

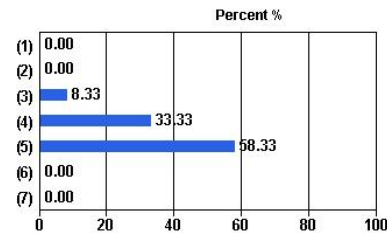
Median: 4.90
Mean: 4.75

Integrated Economic Modelling - ECC3860 - Unit Evaluation Report

Administered: Semester 2, 2012 - WEB

3. The learning resources in this unit supported my studies

Response Scale	Responses	Percent
(1) Strongly disagree	0	0.00%
(2) Disagree	0	0.00%
(3) Neutral	1	8.33%
(4) Agree	4	33.33%
(5) Strongly agree	7	58.33%
(6) Not applicable	0	0.00%
(7) Don't know	0	0.00%
Total (N)	12	100.00%

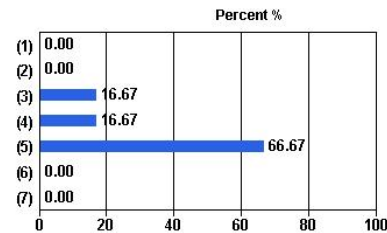


Campus	Median
Clayton	4.64

Median: 4.64
Mean: 4.50

4. The feedback I received in this unit was useful

Response Scale	Responses	Percent
(1) Strongly disagree	0	0.00%
(2) Disagree	0	0.00%
(3) Neutral	2	16.67%
(4) Agree	2	16.67%
(5) Strongly agree	8	66.67%
(6) Not applicable	0	0.00%
(7) Don't know	0	0.00%
Total (N)	12	100.00%

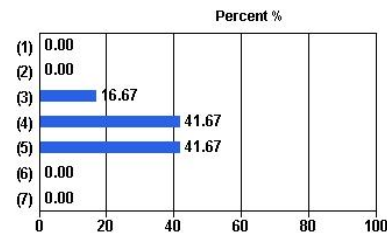


Campus	Median
Clayton	4.75

Median: 4.75
Mean: 4.50

5. Overall I was satisfied with the quality of this unit

Response Scale	Responses	Percent
(1) Strongly disagree	0	0.00%
(2) Disagree	0	0.00%
(3) Neutral	2	16.67%
(4) Agree	5	41.67%
(5) Strongly agree	5	41.67%
(6) Not applicable	0	0.00%
(7) Don't know	0	0.00%
Total (N)	12	100.00%



Campus	Median
Clayton	4.30

Median: 4.30
Mean: 4.25