

Integrated Economic Modelling - ECC3860 - Unit Evaluation Report

Faculty Of Business And Economics

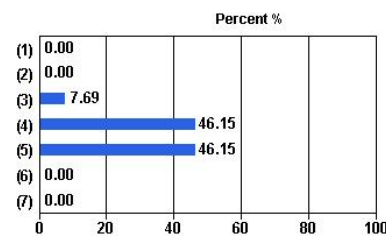
Number of Students Enrolled: 22
Administered: Semester 2, 2011 - WEB

Overall response: 59.09%
Number of questionnaires completed: 13

University Wide Items

1. The unit enabled me to achieve its learning objectives

Response Scale	Responses	Percent
(1) Strongly disagree	0	0.00%
(2) Disagree	0	0.00%
(3) Neutral	1	7.69%
(4) Agree	6	46.15%
(5) Strongly agree	6	46.15%
(6) Not applicable	0	0.00%
(7) Don't know	0	0.00%
Total (N)	13	100.00%

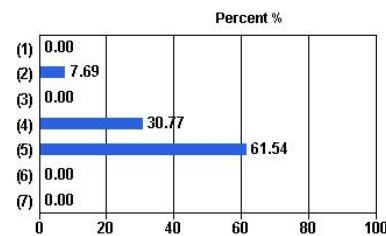


Campus	Median
Clayton	4.42

Median: 4.42
Mean: 4.38

2. I found the unit to be intellectually stimulating

Response Scale	Responses	Percent
(1) Strongly disagree	0	0.00%
(2) Disagree	1	7.69%
(3) Neutral	0	0.00%
(4) Agree	4	30.77%
(5) Strongly agree	8	61.54%
(6) Not applicable	0	0.00%
(7) Don't know	0	0.00%
Total (N)	13	100.00%



Campus	Median
Clayton	4.69

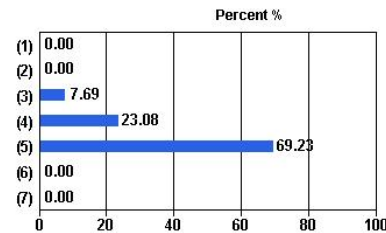
Median: 4.69
Mean: 4.46

Integrated Economic Modelling - ECC3860 - Unit Evaluation Report

Administered: Semester 2, 2011 - WEB

3. The learning resources in this unit supported my studies

Response Scale	Responses	Percent
(1) Strongly disagree	0	0.00%
(2) Disagree	0	0.00%
(3) Neutral	1	7.69%
(4) Agree	3	23.08%
(5) Strongly agree	9	69.23%
(6) Not applicable	0	0.00%
(7) Don't know	0	0.00%
Total (N)	13	100.00%

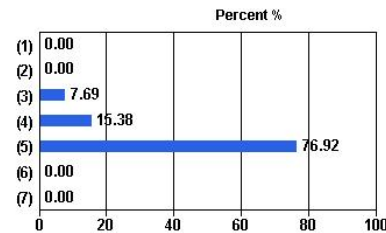


Campus	Median
Clayton	4.78

Median: 4.78
Mean: 4.62

4. The feedback I received in this unit was useful

Response Scale	Responses	Percent
(1) Strongly disagree	0	0.00%
(2) Disagree	0	0.00%
(3) Neutral	1	7.69%
(4) Agree	2	15.38%
(5) Strongly agree	10	76.92%
(6) Not applicable	0	0.00%
(7) Don't know	0	0.00%
Total (N)	13	100.00%

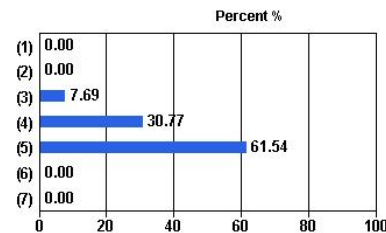


Campus	Median
Clayton	4.85

Median: 4.85
Mean: 4.69

5. Overall I was satisfied with the quality of this unit

Response Scale	Responses	Percent
(1) Strongly disagree	0	0.00%
(2) Disagree	0	0.00%
(3) Neutral	1	7.69%
(4) Agree	4	30.77%
(5) Strongly agree	8	61.54%
(6) Not applicable	0	0.00%
(7) Don't know	0	0.00%
Total (N)	13	100.00%



Campus	Median
Clayton	4.69

Median: 4.69
Mean: 4.54