

Prosperity, Poverty And Sustainability In A Globalised World - ENV4060/ENV5060 - Unit Evaluation Report

FACULTY OF ARTS

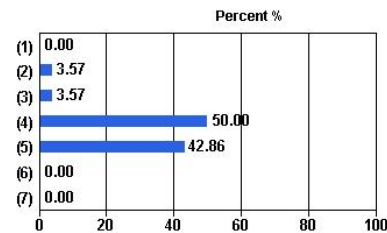
Number of Students Enrolled: 46
Administered: Semester 1, 2010 - WEB

Overall response: 60.87%
Number of questionnaires completed: 28

University Wide Items

1. The unit enabled me to achieve its learning objectives

Response Scale	Responses	Percent
(1) Strongly disagree	0	0.00%
(2) Disagree	1	3.57%
(3) Neutral	1	3.57%
(4) Agree	14	50.00%
(5) Strongly agree	12	42.86%
(6) Not applicable	0	0.00%
(7) Don't know	0	0.00%
Total (N)	28	100.00%

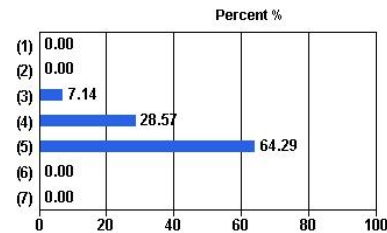


Campus	Median
Clayton	4.36

Median: 4.36
Mean: 4.32

2. I found the unit to be intellectually stimulating

Response Scale	Responses	Percent
(1) Strongly disagree	0	0.00%
(2) Disagree	0	0.00%
(3) Neutral	2	7.14%
(4) Agree	8	28.57%
(5) Strongly agree	18	64.29%
(6) Not applicable	0	0.00%
(7) Don't know	0	0.00%
Total (N)	28	100.00%



Campus	Median
Clayton	4.72

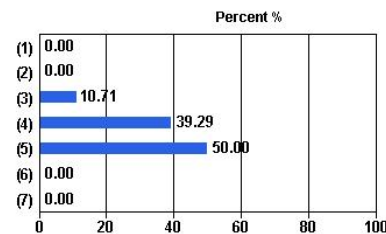
Median: 4.72
Mean: 4.57

Prosperity, Poverty And Sustainability In A Globalised World - ENV4060/ENV5060 - Unit Evaluation Report

Administered: Semester 1, 2010 - WEB

3. The learning resources in this unit supported my studies

Response Scale	Responses	Percent
(1) Strongly disagree	0	0.00%
(2) Disagree	0	0.00%
(3) Neutral	3	10.71%
(4) Agree	11	39.29%
(5) Strongly agree	14	50.00%
(6) Not applicable	0	0.00%
(7) Don't know	0	0.00%
Total (N)	28	100.00%

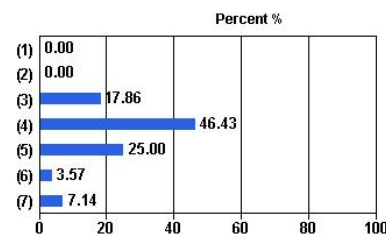


Campus	Median
Clayton	4.50

Median: 4.50
Mean: 4.39

4. The feedback I received in this unit was useful

Response Scale	Responses	Percent
(1) Strongly disagree	0	0.00%
(2) Disagree	0	0.00%
(3) Neutral	5	17.86%
(4) Agree	13	46.43%
(5) Strongly agree	7	25.00%
(6) Not applicable	1	3.57%
(7) Don't know	2	7.14%
Total (N)	28	100.00%

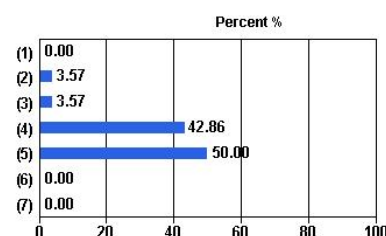


Campus	Median
Clayton	4.08

Median: 4.08
Mean: 4.08

5. Overall I was satisfied with the quality of this unit

Response Scale	Responses	Percent
(1) Strongly disagree	0	0.00%
(2) Disagree	1	3.57%
(3) Neutral	1	3.57%
(4) Agree	12	42.86%
(5) Strongly agree	14	50.00%
(6) Not applicable	0	0.00%
(7) Don't know	0	0.00%
Total (N)	28	100.00%



Campus	Median
Clayton	4.50

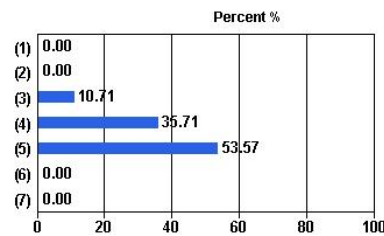
Median: 4.50
Mean: 4.39

Prosperity, Poverty And Sustainability In A Globalised World - ENV4060/ENV5060 - Unit Evaluation Report

Administered: Semester 1, 2010 - WEB

6. The organisation and progression of the topics in this unit made sense to me

Response Scale	Responses	Percent
(1) Strongly disagree	0	0.00%
(2) Disagree	0	0.00%
(3) Neutral	3	10.71%
(4) Agree	10	35.71%
(5) Strongly agree	15	53.57%
(6) Not applicable	0	0.00%
(7) Don't know	0	0.00%
Total (N)	28	100.00%

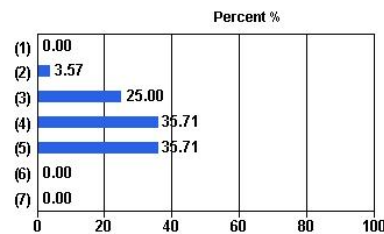


Campus	Median
Clayton	4.57

Median: 4.57
Mean: 4.43

7. I found the instructions and criteria for assessment tasks were clear

Response Scale	Responses	Percent
(1) Strongly disagree	0	0.00%
(2) Disagree	1	3.57%
(3) Neutral	7	25.00%
(4) Agree	10	35.71%
(5) Strongly agree	10	35.71%
(6) Not applicable	0	0.00%
(7) Don't know	0	0.00%
Total (N)	28	100.00%

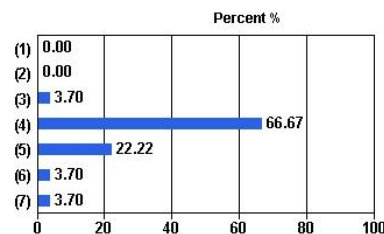


Campus	Median
Clayton	4.10

Median: 4.10
Mean: 4.04

8. I had sufficient access to teaching staff out of class

Response Scale	Responses	Percent
(1) Strongly disagree	0	0.00%
(2) Disagree	0	0.00%
(3) Neutral	1	3.70%
(4) Agree	18	66.67%
(5) Strongly agree	6	22.22%
(6) Not applicable	1	3.70%
(7) Don't know	1	3.70%
Total (N)	27	100.00%



Campus	Median
Clayton	4.14

Median: 4.14
Mean: 4.20

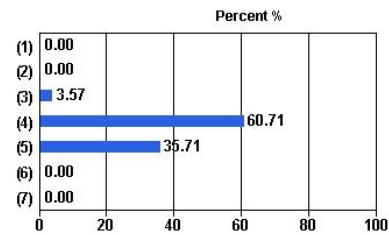
Prosperity, Poverty And Sustainability In A Globalised World - ENV4060/ENV5060 - Unit Evaluation Report

Administered: Semester 1, 2010 - WEB

Faculty Wide Items

9. I would recommend this unit to other students

Response Scale	Responses	Percent
(1) Strongly disagree	0	0.00%
(2) Disagree	0	0.00%
(3) Neutral	1	3.57%
(4) Agree	17	60.71%
(5) Strongly agree	10	35.71%
(6) Not applicable	0	0.00%
(7) Don't know	0	0.00%
Total (N)	28	100.00%

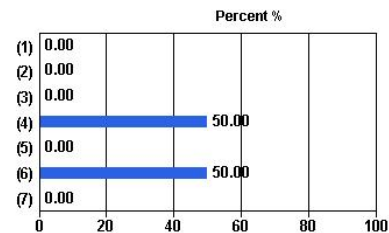


Campus	Median
Clayton	4.26

Median: 4.26
Mean: 4.32

10. For off campus students only: The unit was organised in ways that helped off-campus students overcome the difficulties that arise from not being able to attend on-campus classes.

Response Scale	Responses	Percent
(1) Strongly disagree	0	0.00%
(2) Disagree	0	0.00%
(3) Neutral	0	0.00%
(4) Agree	2	50.00%
(5) Strongly agree	0	0.00%
(6) Not applicable	2	50.00%
(7) Don't know	0	0.00%
Total (N)	4	100.00%



Campus	Median
Clayton	4.00

Median: 4.00
Mean: 4.00