

Prosperity, Poverty And Sustainability In A Globalised World - ECC2800 - Unit Evaluation Report

Faculty Of Business And Economics

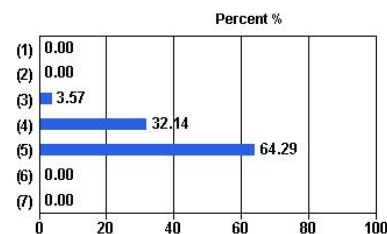
Number of Students Enrolled: 61
Administered: Semester 1, 2013 - WEB

Overall response: 45.90%
Number of questionnaires completed: 28

University Wide Items

1. The unit enabled me to achieve its learning objectives

Response Scale	Responses	Percent
(1) Strongly disagree	0	0.00%
(2) Disagree	0	0.00%
(3) Neutral	1	3.57%
(4) Agree	9	32.14%
(5) Strongly agree	18	64.29%
(6) Not applicable	0	0.00%
(7) Don't know	0	0.00%
Total (N)	28	100.00%

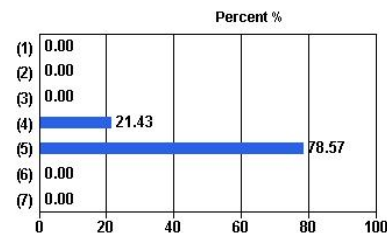


Campus	Median
Clayton	4.72

Median: 4.72
Mean: 4.61

2. I found the unit to be intellectually stimulating

Response Scale	Responses	Percent
(1) Strongly disagree	0	0.00%
(2) Disagree	0	0.00%
(3) Neutral	0	0.00%
(4) Agree	6	21.43%
(5) Strongly agree	22	78.57%
(6) Not applicable	0	0.00%
(7) Don't know	0	0.00%
Total (N)	28	100.00%



Campus	Median
Clayton	4.86

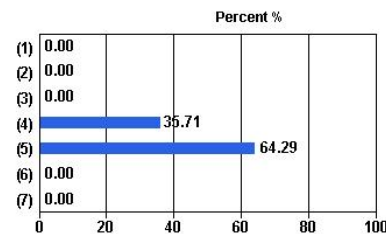
Median: 4.86
Mean: 4.79

Prosperity, Poverty And Sustainability In A Globalised World - ECC2800 - Unit Evaluation Report

Administered: Semester 1, 2013 - WEB

3. The learning resources in this unit supported my studies

Response Scale	Responses	Percent
(1) Strongly disagree	0	0.00%
(2) Disagree	0	0.00%
(3) Neutral	0	0.00%
(4) Agree	10	35.71%
(5) Strongly agree	18	64.29%
(6) Not applicable	0	0.00%
(7) Don't know	0	0.00%
Total (N)	28	100.00%

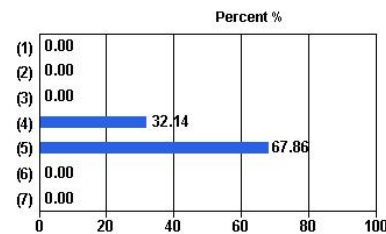


Campus	Median
Clayton	4.72

Median: 4.72
Mean: 4.64

4. The feedback I received in this unit was useful

Response Scale	Responses	Percent
(1) Strongly disagree	0	0.00%
(2) Disagree	0	0.00%
(3) Neutral	0	0.00%
(4) Agree	9	32.14%
(5) Strongly agree	19	67.86%
(6) Not applicable	0	0.00%
(7) Don't know	0	0.00%
Total (N)	28	100.00%

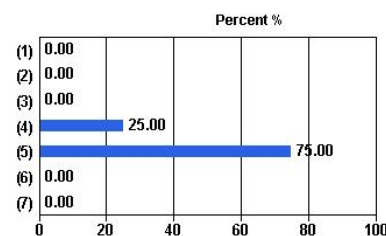


Campus	Median
Clayton	4.76

Median: 4.76
Mean: 4.68

5. Overall I was satisfied with the quality of this unit

Response Scale	Responses	Percent
(1) Strongly disagree	0	0.00%
(2) Disagree	0	0.00%
(3) Neutral	0	0.00%
(4) Agree	7	25.00%
(5) Strongly agree	21	75.00%
(6) Not applicable	0	0.00%
(7) Don't know	0	0.00%
Total (N)	28	100.00%



Campus	Median
Clayton	4.83

Median: 4.83
Mean: 4.75