

Prosperity, Poverty And Sustainability In A Globalised World - ECC2800 - Unit Evaluation Report

Faculty Of Business And Economics

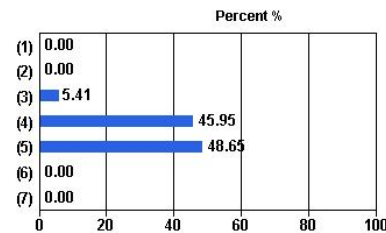
Number of Students Enrolled: 77
 Administered: Semester 1, 2012 - WEB

Overall response: 48.05%
 Number of questionnaires completed: 37

University Wide Items

1. The unit enabled me to achieve its learning objectives

Response Scale	Responses	Percent
(1) Strongly disagree	0	0.00%
(2) Disagree	0	0.00%
(3) Neutral	2	5.41%
(4) Agree	17	45.95%
(5) Strongly agree	18	48.65%
(6) Not applicable	0	0.00%
(7) Don't know	0	0.00%
Total (N)	37	100.00%

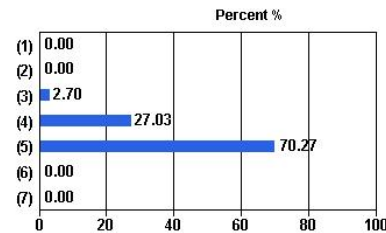


Campus	Median
Clayton	4.47

Median: 4.47
 Mean: 4.43

2. I found the unit to be intellectually stimulating

Response Scale	Responses	Percent
(1) Strongly disagree	0	0.00%
(2) Disagree	0	0.00%
(3) Neutral	1	2.70%
(4) Agree	10	27.03%
(5) Strongly agree	26	70.27%
(6) Not applicable	0	0.00%
(7) Don't know	0	0.00%
Total (N)	37	100.00%



Campus	Median
Clayton	4.79

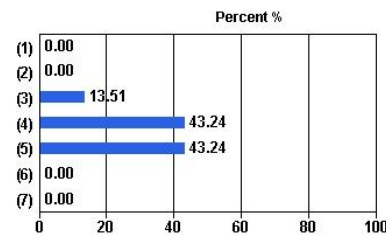
Median: 4.79
 Mean: 4.68

Prosperity, Poverty And Sustainability In A Globalised World - ECC2800 - Unit Evaluation Report

Administered: Semester 1, 2012 - WEB

3. The learning resources in this unit supported my studies

Response Scale	Responses	Percent
(1) Strongly disagree	0	0.00%
(2) Disagree	0	0.00%
(3) Neutral	5	13.51%
(4) Agree	16	43.24%
(5) Strongly agree	16	43.24%
(6) Not applicable	0	0.00%
(7) Don't know	0	0.00%
Total (N)	37	100.00%

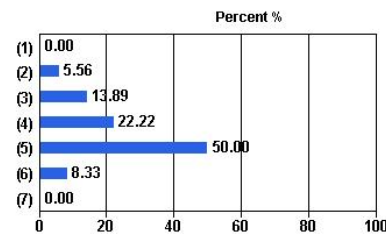


Campus	Median
Clayton	4.34

Median: 4.34
Mean: 4.30

4. The feedback I received in this unit was useful

Response Scale	Responses	Percent
(1) Strongly disagree	0	0.00%
(2) Disagree	2	5.56%
(3) Neutral	5	13.89%
(4) Agree	8	22.22%
(5) Strongly agree	18	50.00%
(6) Not applicable	3	8.33%
(7) Don't know	0	0.00%
Total (N)	36	100.00%

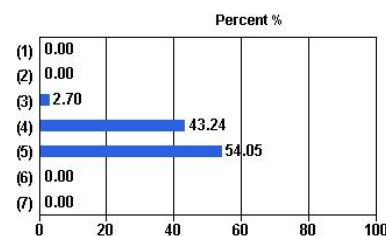


Campus	Median
Clayton	4.58

Median: 4.58
Mean: 4.27

5. Overall I was satisfied with the quality of this unit

Response Scale	Responses	Percent
(1) Strongly disagree	0	0.00%
(2) Disagree	0	0.00%
(3) Neutral	1	2.70%
(4) Agree	16	43.24%
(5) Strongly agree	20	54.05%
(6) Not applicable	0	0.00%
(7) Don't know	0	0.00%
Total (N)	37	100.00%



Campus	Median
Clayton	4.58

Median: 4.58
Mean: 4.51