

Simon Angus - Teaching Evaluation report

Prosperity, poverty and sustainability in a globalised world -
ECC2800_S1-01_CLAYTON_DAY

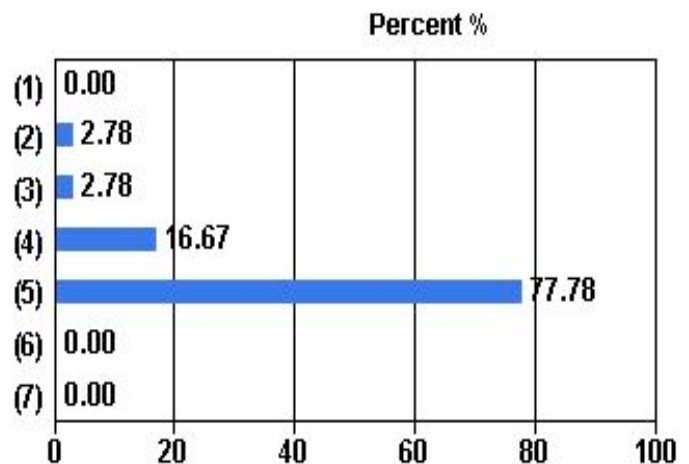
FACULTY OF BUSINESS & ECONOMICS

Administered: Semester 1, 2011

Number of surveys completed: 36

1. Simon Angus' explanations helped my understanding

Response scale	Responses	Percent
(1) Strongly disagree	0	0.00%
(2) Disagree	1	2.78%
(3) Neutral	1	2.78%
(4) Agree	6	16.67%
(5) Strongly Agree	28	77.78%
(6) Not Able to Assess	0	0.00%
(7) Not Applicable	0	0.00%
Total (N)	36	100.00%



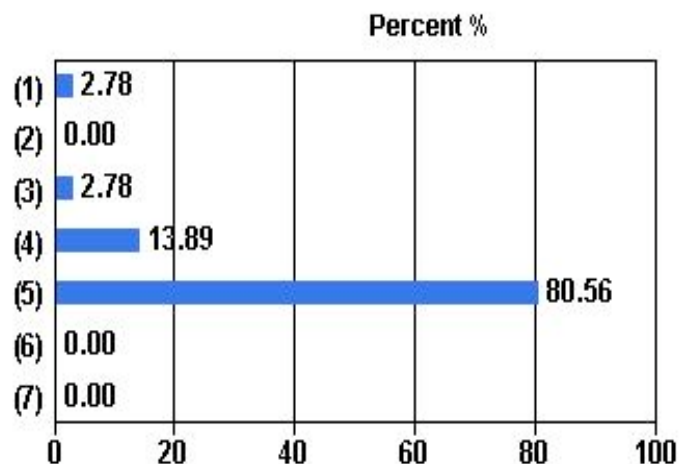
Median: 4.86 *

Mean: 4.69

Agree/Strongly Agree: 94.44 %

2. Simon Angus inspired me to learn more

Response scale	Responses	Percent
(1) Strongly disagree	1	2.78%
(2) Disagree	0	0.00%
(3) Neutral	1	2.78%
(4) Agree	5	13.89%
(5) Strongly Agree	29	80.56%
(6) Not Able to Assess	0	0.00%
(7) Not Applicable	0	0.00%
Total (N)	36	100.00%



Median: 4.88 *

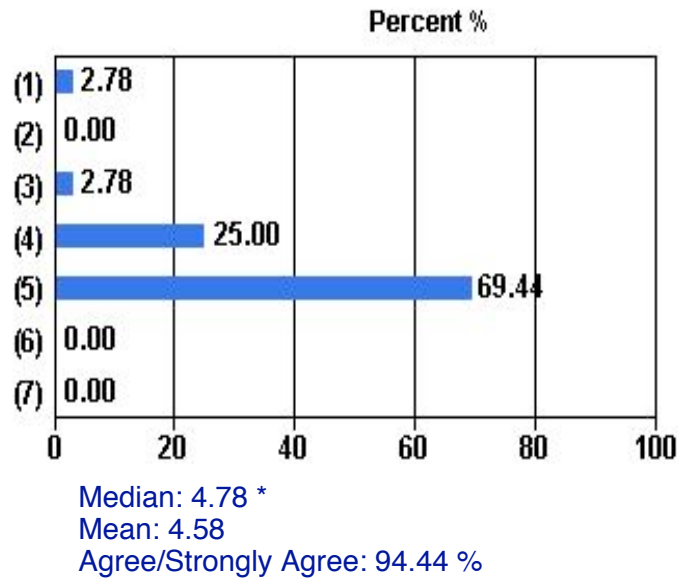
Mean: 4.69

Agree/Strongly Agree: 94.44 %

* The median shown here is calculated under the assumption that the five point scale represents a continuous random variable rather than five discrete categories. For further information on how this measure is calculated please refer to http://www.opq.monash.edu.au/mqu/evaluations/setu/setu_median_calculation.pdf

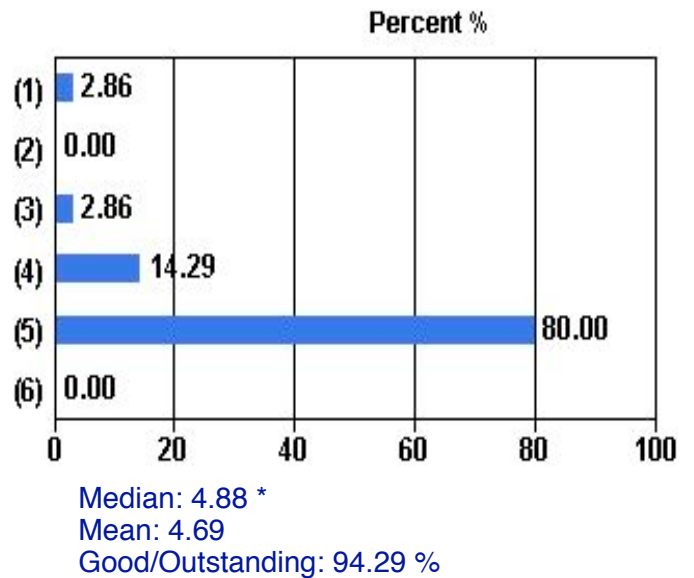
3. Simon Angus encouraged me to participate

Response scale	Responses	Percent
(1) Strongly disagree	1	2.78%
(2) Disagree	0	0.00%
(3) Neutral	1	2.78%
(4) Agree	9	25.00%
(5) Strongly Agree	25	69.44%
(6) Not Able to Assess	0	0.00%
(7) Not Applicable	0	0.00%
Total (N)	36	100.00%



4. Overall, I would rate Simon Angus' teaching as:

Response scale	Responses	Percent
(1) Very Poor	1	2.86%
(2) Poor	0	0.00%
(3) Average	1	2.86%
(4) Good	5	14.29%
(5) Outstanding	28	80.00%
(6) Not Able to Assess	0	0.00%
Total (N)	35	100.00%



* The median shown here is calculated under the assumption that the five point scale represents a continuous random variable rather than five discrete categories. For further information on how this measure is calculated please refer to http://www.opq.monash.edu.au/mqu/evaluations/setu/setu_median_calculation.pdf