

Prosperity, Poverty And Sustainability In A Globalised World - ECC2800 - Unit Evaluation Report

FACULTY OF BUSINESS AND ECONOMICS

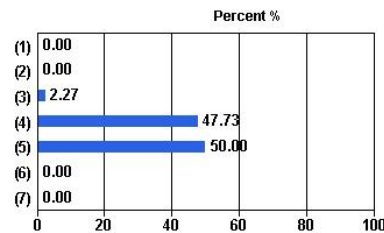
Number of Students Enrolled: 68
 Administered: Semester 1, 2009 - PAPER

Overall response: 66.18%
 Number of questionnaires completed: 45

University Wide Items

1. The unit enabled me to achieve its learning objectives

Response Scale	Responses	Percent
(1) Strongly disagree	0	0.00%
(2) Disagree	0	0.00%
(3) Neutral	1	2.27%
(4) Agree	21	47.73%
(5) Strongly agree	22	50.00%
(6) Not applicable	0	0.00%
(7) Don't know	0	0.00%
Total (N)	44	100.00%

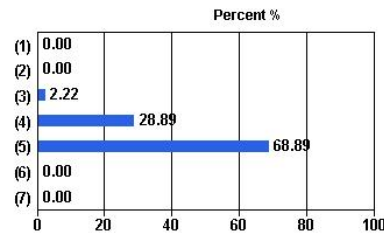


Campus	Median
Clayton	4.50

Median: 4.50
 Mean: 4.48

2. I found the unit to be intellectually stimulating

Response Scale	Responses	Percent
(1) Strongly disagree	0	0.00%
(2) Disagree	0	0.00%
(3) Neutral	1	2.22%
(4) Agree	13	28.89%
(5) Strongly agree	31	68.89%
(6) Not applicable	0	0.00%
(7) Don't know	0	0.00%
Total (N)	45	100.00%



Campus	Median
Clayton	4.77

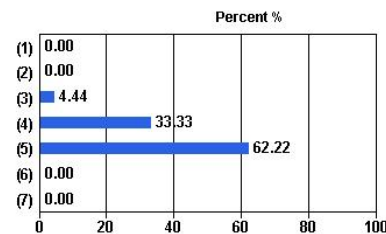
Median: 4.77
 Mean: 4.67

Prosperity, Poverty And Sustainability In A Globalised World - ECC2800 - Unit Evaluation Report

Administered: Semester 1, 2009 - PAPER

3. The learning resources in this unit supported my studies

Response Scale	Responses	Percent
(1) Strongly disagree	0	0.00%
(2) Disagree	0	0.00%
(3) Neutral	2	4.44%
(4) Agree	15	33.33%
(5) Strongly agree	28	62.22%
(6) Not applicable	0	0.00%
(7) Don't know	0	0.00%
Total (N)	45	100.00%

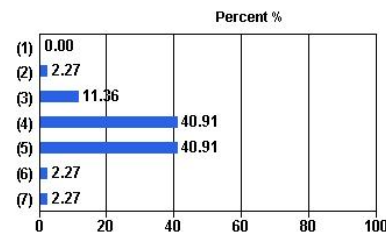


Campus	Median
Clayton	4.70

Median: 4.70
Mean: 4.58

4. The feedback I received in this unit was useful

Response Scale	Responses	Percent
(1) Strongly disagree	0	0.00%
(2) Disagree	1	2.27%
(3) Neutral	5	11.36%
(4) Agree	18	40.91%
(5) Strongly agree	18	40.91%
(6) Not applicable	1	2.27%
(7) Don't know	1	2.27%
Total (N)	44	100.00%

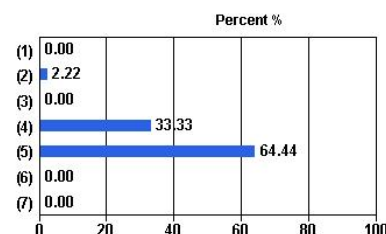


Campus	Median
Clayton	4.33

Median: 4.33
Mean: 4.26

5. Overall I was satisfied with the quality of this unit

Response Scale	Responses	Percent
(1) Strongly disagree	0	0.00%
(2) Disagree	1	2.22%
(3) Neutral	0	0.00%
(4) Agree	15	33.33%
(5) Strongly agree	29	64.44%
(6) Not applicable	0	0.00%
(7) Don't know	0	0.00%
Total (N)	45	100.00%



Campus	Median
Clayton	4.72

Median: 4.72
Mean: 4.60