

Prosperity, Poverty And Sustainability In A Globalised World - APG4429 - Unit Evaluation Report

Faculty Of Arts

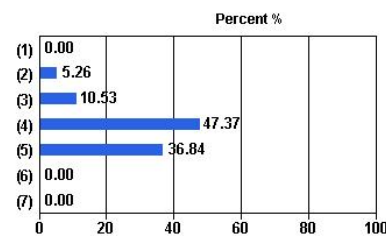
Number of Students Enrolled: 40
Administered: Semester 1, 2014 - WEB

Overall response: 47.50%
Number of questionnaires completed: 19

University Wide Items

1. The unit enabled me to achieve its learning objectives

Response Scale	Responses	Percent
(1) Strongly disagree	0	0.00%
(2) Disagree	1	5.26%
(3) Neutral	2	10.53%
(4) Agree	9	47.37%
(5) Strongly agree	7	36.84%
(6) Not applicable	0	0.00%
(7) Don't know	0	0.00%
Total (N)	19	100.00%

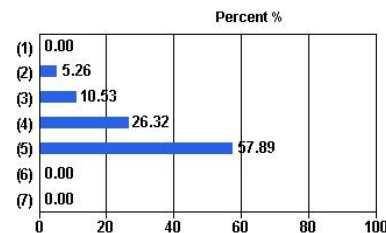


Campus	Median
Clayton	4.22

Median: 4.22
Mean: 4.16

2. I found the unit to be intellectually stimulating

Response Scale	Responses	Percent
(1) Strongly disagree	0	0.00%
(2) Disagree	1	5.26%
(3) Neutral	2	10.53%
(4) Agree	5	26.32%
(5) Strongly agree	11	57.89%
(6) Not applicable	0	0.00%
(7) Don't know	0	0.00%
Total (N)	19	100.00%



Campus	Median
Clayton	4.64

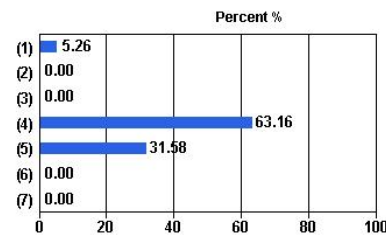
Median: 4.64
Mean: 4.37

Prosperity, Poverty And Sustainability In A Globalised World - APG4429 - Unit Evaluation Report

Administered: Semester 1, 2014 - WEB

3. The learning resources in this unit supported my studies

Response Scale	Responses	Percent
(1) Strongly disagree	1	5.26%
(2) Disagree	0	0.00%
(3) Neutral	0	0.00%
(4) Agree	12	63.16%
(5) Strongly agree	6	31.58%
(6) Not applicable	0	0.00%
(7) Don't know	0	0.00%
Total (N)	19	100.00%

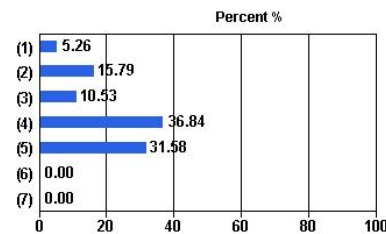


Campus	Median
Clayton	4.21

Median: 4.21
Mean: 4.16

4. The feedback I received in this unit was useful

Response Scale	Responses	Percent
(1) Strongly disagree	1	5.26%
(2) Disagree	3	15.79%
(3) Neutral	2	10.53%
(4) Agree	7	36.84%
(5) Strongly agree	6	31.58%
(6) Not applicable	0	0.00%
(7) Don't know	0	0.00%
Total (N)	19	100.00%

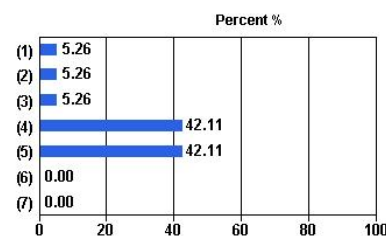


Campus	Median
Clayton	4.00

Median: 4.00
Mean: 3.74

5. Overall I was satisfied with the quality of this unit

Response Scale	Responses	Percent
(1) Strongly disagree	1	5.26%
(2) Disagree	1	5.26%
(3) Neutral	1	5.26%
(4) Agree	8	42.11%
(5) Strongly agree	8	42.11%
(6) Not applicable	0	0.00%
(7) Don't know	0	0.00%
Total (N)	19	100.00%



Campus	Median
Clayton	4.31

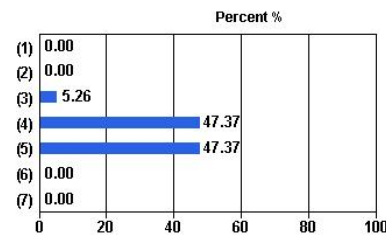
Median: 4.31
Mean: 4.11

Prosperity, Poverty And Sustainability In A Globalised World - APG4429 - Unit Evaluation Report

Administered: Semester 1, 2014 - WEB

6. The organisation and progression of the topics in this unit made sense to me

Response Scale	Responses	Percent
(1) Strongly disagree	0	0.00%
(2) Disagree	0	0.00%
(3) Neutral	1	5.26%
(4) Agree	9	47.37%
(5) Strongly agree	9	47.37%
(6) Not applicable	0	0.00%
(7) Don't know	0	0.00%
Total (N)	19	100.00%

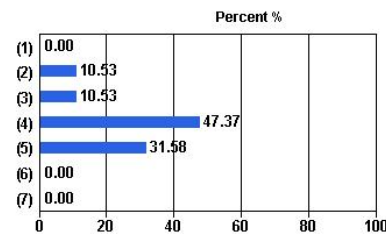


Campus	Median
Clayton	4.44

Median: 4.44
Mean: 4.42

7. I found the instructions and criteria for assessment tasks were clear

Response Scale	Responses	Percent
(1) Strongly disagree	0	0.00%
(2) Disagree	2	10.53%
(3) Neutral	2	10.53%
(4) Agree	9	47.37%
(5) Strongly agree	6	31.58%
(6) Not applicable	0	0.00%
(7) Don't know	0	0.00%
Total (N)	19	100.00%

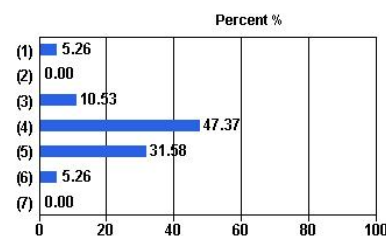


Campus	Median
Clayton	4.11

Median: 4.11
Mean: 4.00

8. I had sufficient access to teaching staff out of class

Response Scale	Responses	Percent
(1) Strongly disagree	1	5.26%
(2) Disagree	0	0.00%
(3) Neutral	2	10.53%
(4) Agree	9	47.37%
(5) Strongly agree	6	31.58%
(6) Not applicable	1	5.26%
(7) Don't know	0	0.00%
Total (N)	19	100.00%



Campus	Median
Clayton	4.17

Median: 4.17
Mean: 4.06

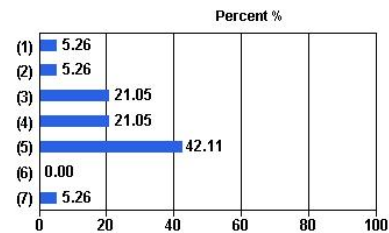
Prosperity, Poverty And Sustainability In A Globalised World - APG4429 - Unit Evaluation Report

Administered: Semester 1, 2014 - WEB

Faculty Wide Items

9. I would recommend this unit to other students

Response Scale	Responses	Percent
(1) Strongly disagree	1	5.26%
(2) Disagree	1	5.26%
(3) Neutral	4	21.05%
(4) Agree	4	21.05%
(5) Strongly agree	8	42.11%
(6) Not applicable	0	0.00%
(7) Don't know	1	5.26%
Total (N)	19	100.00%

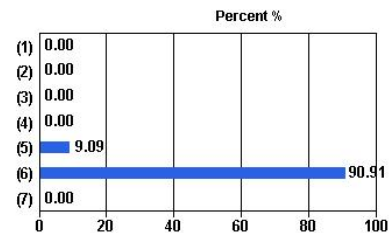


Campus	Median
Clayton	4.25

Median: 4.25
Mean: 3.94

10. For off campus students only: The unit was organised in ways that helped off-campus students overcome the difficulties that arise from not being able to attend on-campus classes.

Response Scale	Responses	Percent
(1) Strongly disagree	0	0.00%
(2) Disagree	0	0.00%
(3) Neutral	0	0.00%
(4) Agree	0	0.00%
(5) Strongly agree	1	9.09%
(6) Not applicable	10	90.91%
(7) Don't know	0	0.00%
Total (N)	11	100.00%



Campus	Median
Clayton	5.00

Median: 5.00
Mean: 5.00