

Simon Angus - Teaching Evaluation report

Prosperity, poverty and sustainability in a globalised world -
APG4429_S1-01_CLAYTON_DAY

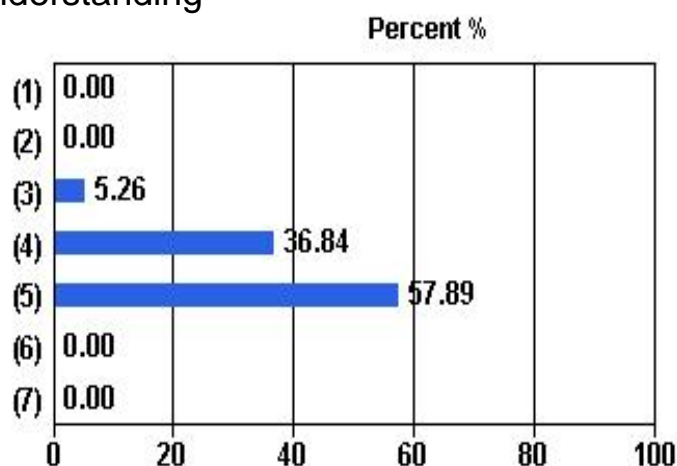
FACULTY OF ARTS

Administered: Semester 1, 2014
Number of students enrolled in the unit: 40

Overall response rate: 47.50 % ^
Surveys completed for this teacher: 19

1. Simon Angus' explanations helped my understanding

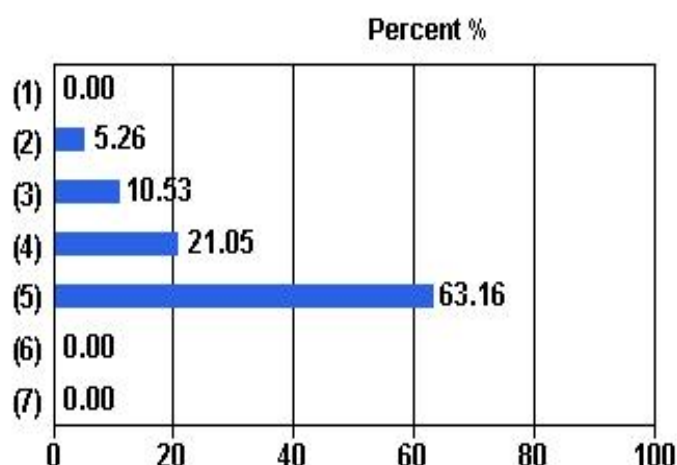
Response scale	Responses	Percent
(1) Strongly disagree	0	0.00%
(2) Disagree	0	0.00%
(3) Neutral	1	5.26%
(4) Agree	7	36.84%
(5) Strongly Agree	11	57.89%
(6) Not Able to Assess	0	0.00%
(7) Not Applicable	0	0.00%
Total (N)	19	100.00%



Median: 4.64 *
Mean: 4.53
Agree/Strongly Agree: 94.74 %

2. Simon Angus inspired me to learn more

Response scale	Responses	Percent
(1) Strongly disagree	0	0.00%
(2) Disagree	1	5.26%
(3) Neutral	2	10.53%
(4) Agree	4	21.05%
(5) Strongly Agree	12	63.16%
(6) Not Able to Assess	0	0.00%
(7) Not Applicable	0	0.00%
Total (N)	19	100.00%



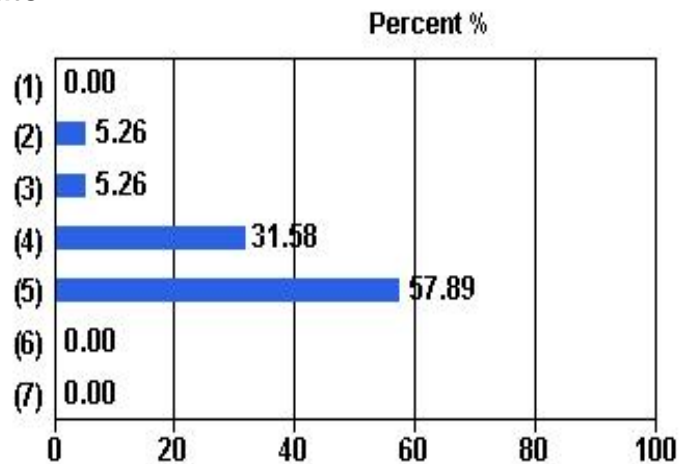
Median: 4.71 *
Mean: 4.42
Agree/Strongly Agree: 84.21 %

^ The response rate shown here is an overall SETU response rate for the unit offering that is based on the proportion of enrolled students that answered the 'overall satisfaction' question in the unit evaluation section of the survey. The response rate for individual teachers (i.e. the proportion of the students that they taught that answered the teaching questions) may differ.

* The median shown here is calculated under the assumption that the five point scale represents a continuous random variable rather than five discrete categories. For further information on how this measure is calculated please refer to http://www.opq.monash.edu.au/mqu/evaluations/setu/setu_median_calculation.pdf

3. Simon Angus encouraged me to participate

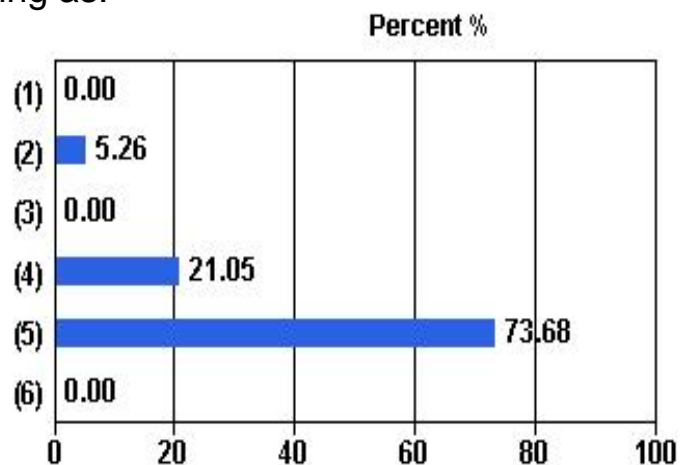
Response scale	Responses	Percent
(1) Strongly disagree	0	0.00%
(2) Disagree	1	5.26%
(3) Neutral	1	5.26%
(4) Agree	6	31.58%
(5) Strongly Agree	11	57.89%
(6) Not Able to Assess	0	0.00%
(7) Not Applicable	0	0.00%
Total (N)	19	100.00%



Median: 4.64 *
 Mean: 4.42
 Agree/Strongly Agree: 89.47 %

4. Overall, I would rate Simon Angus' teaching as:

Response scale	Responses	Percent
(1) Very Poor	0	0.00%
(2) Poor	1	5.26%
(3) Average	0	0.00%
(4) Good	4	21.05%
(5) Outstanding	14	73.68%
(6) Not Able to Assess	0	0.00%
Total (N)	19	100.00%



Median: 4.82 *
 Mean: 4.63
 Good/Outstanding: 94.74 %

* The median shown here is calculated under the assumption that the five point scale represents a continuous random variable rather than five discrete categories. For further information on how this measure is calculated please refer to http://www.opq.monash.edu.au/mqu/evaluations/setu/setu_median_calculation.pdf