

# Prosperity, Poverty And Sustainability In A Globalised World - APG4429 - Unit Evaluation Report

## Faculty Of Arts

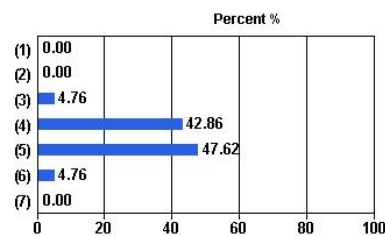
Number of Students Enrolled: 30  
Administered: Semester 1, 2013 - WEB

Overall response: 63.33%  
Number of questionnaires completed: 19

### University Wide Items

#### 1. The unit enabled me to achieve its learning objectives

| Response Scale        | Responses | Percent |
|-----------------------|-----------|---------|
| (1) Strongly disagree | 0         | 0.00%   |
| (2) Disagree          | 0         | 0.00%   |
| (3) Neutral           | 1         | 4.76%   |
| (4) Agree             | 9         | 42.86%  |
| (5) Strongly agree    | 10        | 47.62%  |
| (6) Not applicable    | 1         | 4.76%   |
| (7) Don't know        | 0         | 0.00%   |
| Total (N)             | 21        | 100.00% |

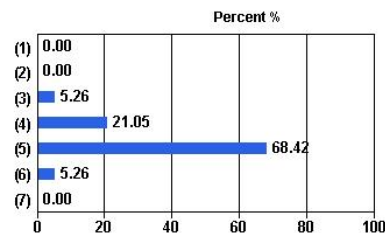


| Campus  | Median |
|---------|--------|
| Clayton | 4.50   |

Median: 4.50  
Mean: 4.45

#### 2. I found the unit to be intellectually stimulating

| Response Scale        | Responses | Percent |
|-----------------------|-----------|---------|
| (1) Strongly disagree | 0         | 0.00%   |
| (2) Disagree          | 0         | 0.00%   |
| (3) Neutral           | 1         | 5.26%   |
| (4) Agree             | 4         | 21.05%  |
| (5) Strongly agree    | 13        | 68.42%  |
| (6) Not applicable    | 1         | 5.26%   |
| (7) Don't know        | 0         | 0.00%   |
| Total (N)             | 19        | 100.00% |



| Campus  | Median |
|---------|--------|
| Clayton | 4.81   |

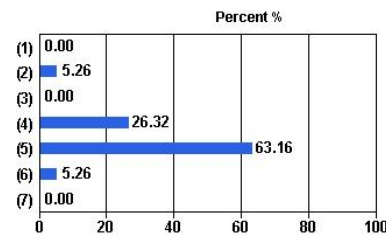
Median: 4.81  
Mean: 4.67

## Prosperity, Poverty And Sustainability In A Globalised World - APG4429 - Unit Evaluation Report

Administered: Semester 1, 2013 - WEB

### 3. The learning resources in this unit supported my studies

| Response Scale        | Responses | Percent |
|-----------------------|-----------|---------|
| (1) Strongly disagree | 0         | 0.00%   |
| (2) Disagree          | 1         | 5.26%   |
| (3) Neutral           | 0         | 0.00%   |
| (4) Agree             | 5         | 26.32%  |
| (5) Strongly agree    | 12        | 63.16%  |
| (6) Not applicable    | 1         | 5.26%   |
| (7) Don't know        | 0         | 0.00%   |
| Total (N)             | 19        | 100.00% |

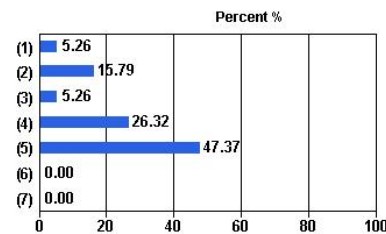


| Campus  | Median |
|---------|--------|
| Clayton | 4.75   |

Median: 4.75  
Mean: 4.56

### 4. The feedback I received in this unit was useful

| Response Scale        | Responses | Percent |
|-----------------------|-----------|---------|
| (1) Strongly disagree | 1         | 5.26%   |
| (2) Disagree          | 3         | 15.79%  |
| (3) Neutral           | 1         | 5.26%   |
| (4) Agree             | 5         | 26.32%  |
| (5) Strongly agree    | 9         | 47.37%  |
| (6) Not applicable    | 0         | 0.00%   |
| (7) Don't know        | 0         | 0.00%   |
| Total (N)             | 19        | 100.00% |

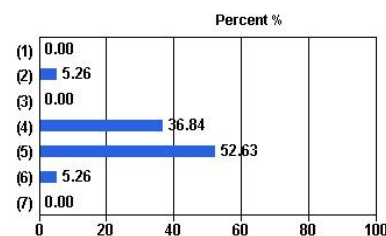


| Campus  | Median |
|---------|--------|
| Clayton | 4.40   |

Median: 4.40  
Mean: 3.95

### 5. Overall I was satisfied with the quality of this unit

| Response Scale        | Responses | Percent |
|-----------------------|-----------|---------|
| (1) Strongly disagree | 0         | 0.00%   |
| (2) Disagree          | 1         | 5.26%   |
| (3) Neutral           | 0         | 0.00%   |
| (4) Agree             | 7         | 36.84%  |
| (5) Strongly agree    | 10        | 52.63%  |
| (6) Not applicable    | 1         | 5.26%   |
| (7) Don't know        | 0         | 0.00%   |
| Total (N)             | 19        | 100.00% |



| Campus  | Median |
|---------|--------|
| Clayton | 4.60   |

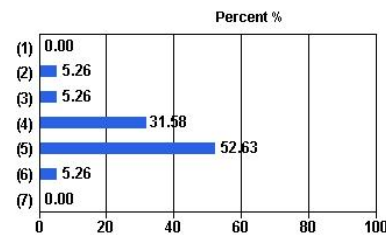
Median: 4.60  
Mean: 4.44

## Prosperity, Poverty And Sustainability In A Globalised World - APG4429 - Unit Evaluation Report

Administered: Semester 1, 2013 - WEB

### 6. The organisation and progression of the topics in this unit made sense to me

| Response Scale        | Responses | Percent |
|-----------------------|-----------|---------|
| (1) Strongly disagree | 0         | 0.00%   |
| (2) Disagree          | 1         | 5.26%   |
| (3) Neutral           | 1         | 5.26%   |
| (4) Agree             | 6         | 31.58%  |
| (5) Strongly agree    | 10        | 52.63%  |
| (6) Not applicable    | 1         | 5.26%   |
| (7) Don't know        | 0         | 0.00%   |
| Total (N)             | 19        | 100.00% |

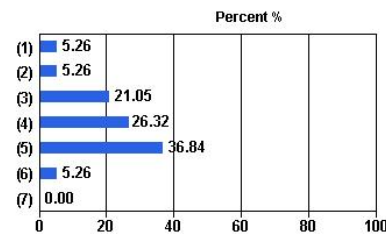


| Campus  | Median |
|---------|--------|
| Clayton | 4.60   |

Median: 4.60  
Mean: 4.39

### 7. I found the instructions and criteria for assessment tasks were clear

| Response Scale        | Responses | Percent |
|-----------------------|-----------|---------|
| (1) Strongly disagree | 1         | 5.26%   |
| (2) Disagree          | 1         | 5.26%   |
| (3) Neutral           | 4         | 21.05%  |
| (4) Agree             | 5         | 26.32%  |
| (5) Strongly agree    | 7         | 36.84%  |
| (6) Not applicable    | 1         | 5.26%   |
| (7) Don't know        | 0         | 0.00%   |
| Total (N)             | 19        | 100.00% |

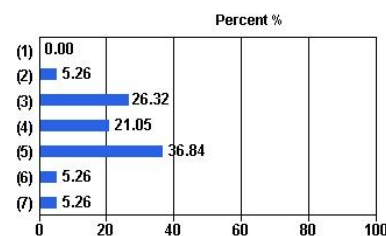


| Campus  | Median |
|---------|--------|
| Clayton | 4.10   |

Median: 4.10  
Mean: 3.89

### 8. I had sufficient access to teaching staff out of class

| Response Scale        | Responses | Percent |
|-----------------------|-----------|---------|
| (1) Strongly disagree | 0         | 0.00%   |
| (2) Disagree          | 1         | 5.26%   |
| (3) Neutral           | 5         | 26.32%  |
| (4) Agree             | 4         | 21.05%  |
| (5) Strongly agree    | 7         | 36.84%  |
| (6) Not applicable    | 1         | 5.26%   |
| (7) Don't know        | 1         | 5.26%   |
| Total (N)             | 19        | 100.00% |



| Campus  | Median |
|---------|--------|
| Clayton | 4.13   |

Median: 4.13  
Mean: 4.00

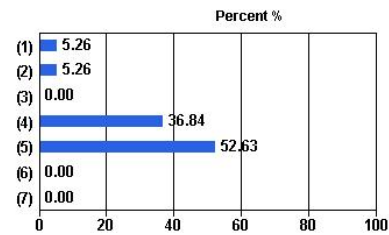
## Prosperity, Poverty And Sustainability In A Globalised World - APG4429 - Unit Evaluation Report

Administered: Semester 1, 2013 - WEB

### Faculty Wide Items

#### 9. I would recommend this unit to other students

| Response Scale        | Responses | Percent |
|-----------------------|-----------|---------|
| (1) Strongly disagree | 1         | 5.26%   |
| (2) Disagree          | 1         | 5.26%   |
| (3) Neutral           | 0         | 0.00%   |
| (4) Agree             | 7         | 36.84%  |
| (5) Strongly agree    | 10        | 52.63%  |
| (6) Not applicable    | 0         | 0.00%   |
| (7) Don't know        | 0         | 0.00%   |
| Total (N)             | 19        | 100.00% |

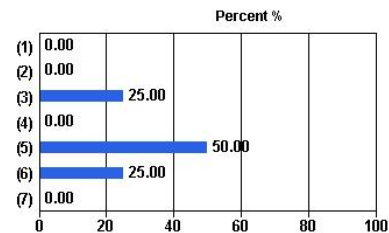


| Campus  | Median |
|---------|--------|
| Clayton | 4.55   |

Median: 4.55  
Mean: 4.26

#### 10. For off campus students only: The unit was organised in ways that helped off-campus students overcome the difficulties that arise from not being able to attend on-campus classes.

| Response Scale        | Responses | Percent |
|-----------------------|-----------|---------|
| (1) Strongly disagree | 0         | 0.00%   |
| (2) Disagree          | 0         | 0.00%   |
| (3) Neutral           | 1         | 25.00%  |
| (4) Agree             | 0         | 0.00%   |
| (5) Strongly agree    | 2         | 50.00%  |
| (6) Not applicable    | 1         | 25.00%  |
| (7) Don't know        | 0         | 0.00%   |
| Total (N)             | 4         | 100.00% |



| Campus  | Median |
|---------|--------|
| Clayton | 4.75   |

Median: 4.75  
Mean: 4.33